

Vandal Dome Network Camera Quick Setup Guide

NO:101-100-0368-01
Issue:1.0

Precautions

Fully understand this document before using this device, and strictly observe rules in this document when using this device. If you install this device in public places, provide the tip "You have entered the area of electronic surveillance" in an eye-catching place. Failure to correctly use electrical products may cause fire and severe injuries.

WARNING	It alerts you to moderate dangers which, if not avoided, may cause minor or moderate injuries.
CAUTION	It alerts you to risks. Neglect of these risks may cause device damage, data loss, device performance deterioration, or unpredictable results.
NOTE	It provides additional information.

WARNING

- Strictly observe installation requirements when installing the device. The manufacturer shall not be held responsible for device damage caused by users' non-conformance to these requirements.
- Strictly conform to local electrical safety standards and use power adapters that are marked with the LPS standard when installing and using this device. Otherwise, this device may be damaged.
- Use accessories delivered with this device. The voltage must meet input voltage requirements for this device.
- If this device is installed in places with unsteady voltage, ground this device to discharge high energy such as electrical surges in order to prevent the power supply from burning out.
- When this device is in use, ensure that no water or any liquid flows into the device. If water or liquid unexpectedly flows into the device, immediately power off the device and disconnect all cables (such as power cables and network cables) from this device.
- Do not focus strong light (such as lighted bulbs or sunlight) on

this device. Otherwise, the service life of the image sensor may be shortened.

- If this device is installed in places where thunder and lightning frequently occur, ground the device nearby to discharge high energy such as thunder strikes in order to prevent device damage.

CAUTION

- Avoid heavy loads, intensive shakes, and soaking to prevent damages during transportation and storage. The warranty does not cover any device damage that is caused during secondary packaging and transportation after the original packaging is taken apart.
- Protect this device from fall-down and intensive strikes, keep the device away from magnetic field interference, and do not install the device in places with shaking surfaces or under shocks.
- Clean the device with a soft dry cloth. For stubborn dirt, dip the cloth into slight neutral cleanser, gently wipe the dirt with the cloth, and then dry the device.
- Do not jam the ventilation opening. Follow the installation instructions provided in this document when installing the device.
- Keep the device away from heat sources such as radiators, electric heaters, or other heat equipment.
- Keep the device away from moist, dusty, extremely hot or cold places, or places with strong electric radiation.
- If the device is installed outdoors, take insect- and moisture-proof measures to avoid circuit board corrosion that can affect monitoring.
- Remove the power plug if the device is idle for a long time.

Special Announcement

- All complete products sold by the manufacturer are delivered along with nameplates, quick setup guide and accessories after strict inspection. The manufacturer shall not be held responsible for counterfeit products.
- The manufacturer will update this manual according to product function enhancement or changes and regularly update the software and hardware described in this manual. Update information will be added to new versions of this manual without prior notice.
- This manual may contain misprints, technology information that is not accurate enough, or product function and operation description that is slightly inconsistent with the actual product, the final interpretation of company is as a standard.
- This manual is only for reference and does not ensure that the information is totally consistent with the actual product. For consistency, see the actual product.

NOTE

For more information, please refer to CD and website.

1 Open Package Examination

Open the package, check the appearance of product for no obvious damage, and confirm the item list for table 1-1 is consistent.

Table 1-1 Packing list

Component	M	L	Remark
Vandal Dome Network Camera	1	1	
Quick Setup Guide	1	1	
CD-ROM	1	1	
Installation location sticker	1	1	
T10 Screw driver	1		
T15 Screw driver		1	
Plug wrench		1	
Swell plastic buttonφ5.6×29mm	3	3	
Stainless self-tapping screw PA4.0×30mm	3	3	
Network access port protective cover	1	1	
Waterproof rubber seal	1	1	
Video patch cord	1	1	
Terminal block	2	2	Optional
Bottom cover seal ring	1		

2 Device Structure

2.1 Device Ports

NOTE

Different device may have different ports and multi-head cable, please refer to the actual product.

Figure 2-1 Hardware ports

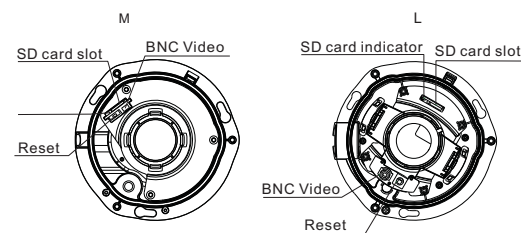


Table 2-1 Hardware ports description

Port Name	Description
SD card slot	Install a SD card. NOTE <ul style="list-style-type: none"> Before install a SD card, verify the card not in write protection state. Before remove the SD card. Verify the card not in write protection state. Otherwise, the data may be lost ,or the SD card may be damaged.
SD card indicator	Indicate the card status, the status is described as follows: <ul style="list-style-type: none"> Off: No card is inserted On: A SD card is inserted.
Reset button	Restores the camera to the factory settings by pressing and holding this button for more than five seconds.
BNC Video	Sends an analog video signal. You can connect the camera to a TV monitor through this port to view the analog video.

Figure2-2 Multi-head cable

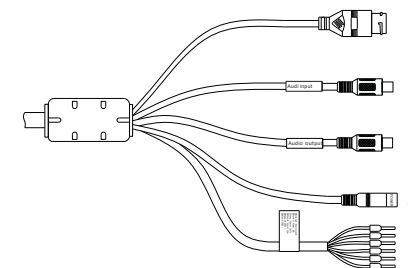


Table 2-2 Multi-head cable description

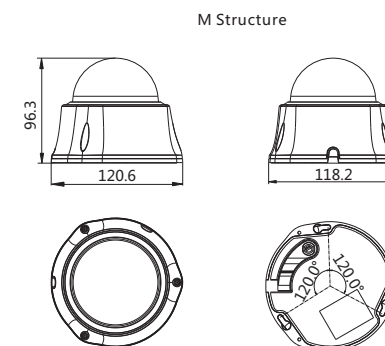
ID	Core	Description	Remark	
1	Network access port	Connects to a standard Ethernet cable.		
2	Audio input port	Receives an analog audio signal from devices such as a sound pickup device.	Applied for audio function	
3	Audio output port	Connects to an external audio device such as a speaker.		
4	Power supply (DC 12V)	Connects to a 12V direct current (DC) power supply or 24V alternating current (AC) power supply.		
5	Gray core	Alarm output terminal A(normal open)	Applied for alarm function	
	Purple core	Alarm output terminal B(normal open)		
	Yellow core	Alarm input positive terminal		
	Orange core	Alarm input ground terminal		
	Green core	RS485+	Connects an external Pan Tilt Zoom	Optional
	Blue core	RS485-		

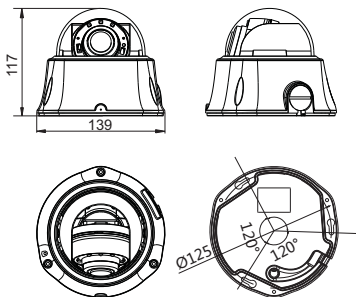
2.2 Camera Dimensions

NOTE

Different device may have different dimensions, please refer to the actual product.

Figure 2-3 Dimensions (Unit:mm)





3 Device Installation

WARNING

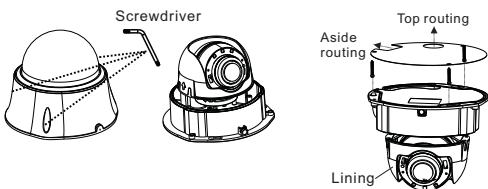
To avoid moisture influence, install the dome cover at least half an hour after the camera is installed and powered on.

Installation Steps:

Step 1 Use the screwdriver in the accessory package to unscrew the three screws on the dome cover. The camera is opened, as shown in figure 3-1.

Figure 3-1 Opening camera

Figure 3-2 Fixing the camera



Step 2 Stick the Installation location sticker on the Installation surface. Drill three holes based on the marks on the sticker. Drive the swell plastic buttons into the holes.

Step 3 Install the bottom cover sealing ring included in accessories on the groove (For M structure). Mount the camera on the ceiling (wall) and fasten the fixing screws, as shown in figure 3-2.

Step 4 Connect the multi-connector cable.

NOTE

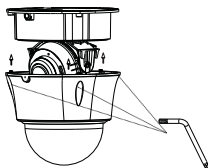
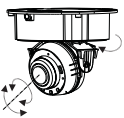
you can route cables from the top or from aside. If you use the top routing method, drill a hole in the surface first. If you use the aside routing method. When you route cables from aside, Please route the multi-head cable out from the side gap at the bottom of the camera (If a plug included, use the plug wrench to unscrew it first).

Step 5 Remove the lining of camera. Use the Video patch cord in the accessory package to connect the second video port. Then view the video, adjust the lens angle horizontally and vertically, adjust the lens focal length and video angle range, and insert the SD card, as shown in figure 3-3.

Step 6 Install back the camera lining and fix the upper cover as shown in figure 3-4.

Figure 3-3 Adjusting the camera

Figure 3-4 Fixing the upper cover



4 Quick Configuration(e.g IE)

4.1 Login

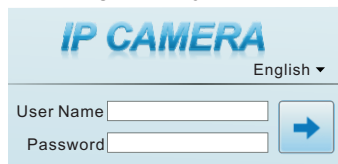
Step 1 Open the Internet Explorer, enter the IP address of IP camera (default value: 192.168.0.120) in the address box, and press Enter. The login page is displayed, as shown in figure 4-1.

Step 2 Input the user name and password.

NOTE

The default user name is admin. The default password is admin. Change the password when you log in the system for first time to ensure system security. You can change the system display language on the login page.

Figure 4-1 Login



Step3 Click Login, the main page is displayed.

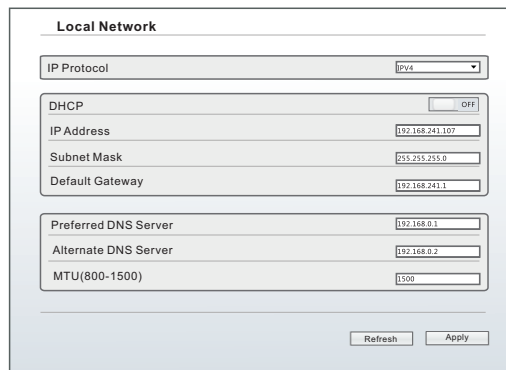
4.2 Modify IP address

Choose Configuration > Device > Local Network, the Local Network page is displayed.

Enter the IP address in the IP Address box and click Apply as shown in figure 4-2.

After the success of the IP address setting, please use the new IP address to log in the Web interface.

Figure 4-2 Local Network



4.3 Browsing Video

To ensure the real-time video can be played properly, you must perform the following operation when you log in the web for the first time:

Step 1 the Internet Explorer. Choose Tools > Internet options > Security > Trusted sites > Sites, in the display dialog box, click Add, as shown in figure 4-3.

Step 2 In the Internet Explorer, choose Tool > Internet Options > Security > Customer level, and set Download unsigned ActiveX control and initialize and script ActiveX controls not marked as safe for scripting under ActiveX controls and plug-ins to Enable, as shown in figure 4-4.

Figure 4-3 Adding a trusted site

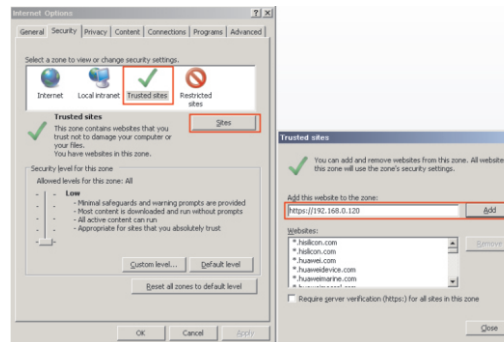
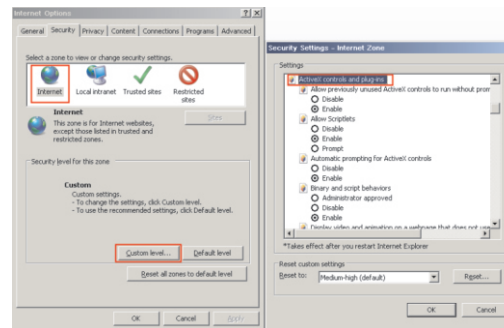


Figure 4-4 Configuring ActiveX control and plug-in



Step 3 Download and install the player control as prompted.

NOTE

If the repair tips displayed when installing the control, please ignore the prompt, and continue the installation, the login page is displayed when the control is loaded.

To browse a real-time video, click Live Video. The Live Video page is displayed, as shown in figure 4-5.

Figure 4-5 Live Video



4.4 Two-way audio

NOTE

Partial camera do not support two-way audio, this section do not apply.

4.4.1 Camera ↔ PC

Connection :

Step 1 Connect microphone to audio input interface of camera.
Step 2 Connect speaker to the PC audio output interface.
Step 3 Log in camera Web, click to turn on two-way audio.

4.4.2 PC ↔ Camera

Step1 Connect microphone to PC audio input interface.
Step2 Connect speaker to camera audio out interface.
Step3 Log in camera Web, click to turn on two-way audio.

4.5 Alarm Configuration

NOTE

Partial camera do not support alarm, this section do not apply.

Alarm input and Alarm output connection:

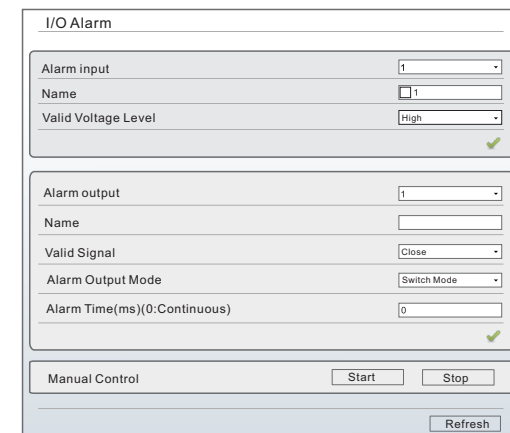
Step1 Connect alarm input device to Alarm IN0 and Alarm COM0 of multi-head cable.

Step2 Connect alarm output device to Alarm OUT1 and Alarm COM1 of multi-head cable, alarm output interface can connect to normal open device only.

Step3 Log in Web, Choose Configuration>Alarm>I/O Alarm, set the parameters as shown in figure 4-6.

Step4 Choose Configuration>Alarm>I/O Alarm Linkage, enable the I/O Alarm and set the parameters of Schedule Setting.

Figure 4-6 Alarm



5 Appendix : Hazardous Substance Declaration

Component	Hazardous Substance or Element					
	Plumbum (Pb)	Mercury (Hg)	Cadmium (Cd)	Hexavalent Chromium (Cr6+)	Polybrominated Biphenyls (PBB)	Polybrominated Diphenyl Ethers (PBDE)
Structural part	x	o	o	o	o	o
Board/circuit module	x	o	o	o	o	o
Cable connector	x	o	o	o	o	o
Accessories	x	o	o	o	o	o

NOTE

○: indicates that the concentration of the hazardous substance in all homogeneous substances of the component is within the limit specified in SJ/T 11363-2006 Requirements for Concentration Limits for Certain Hazardous Substances in Electronic Information Products.

x: indicates that the concentration of the hazardous substance in at least one homogeneous substance of the component exceeds the limit specified in SJ/T 11363-2006 Requirements for Concentration Limits for Certain Hazardous Substances in Electronic Information Products.